

# Z1 370Z FENDER BRACES INSTALLATION MANUAL



This Installation Manual is intended for the following models:

2009-2020

Nissan 370Z

## **PROLOGUE:**

Study these instructions completely before proceeding to assembly. The installer must have a thorough knowledge of automotive systems operation. If unfamiliar with any of the concepts outlined in this instruction, we recommend the installation be completed by a qualified professional.

## **WARNING!**

Extreme caution should be taken when performing maintenance or performance upgrades to your vehicle. Please observe and abide by any Warning or Caution labels placed on the various components and tools used when servicing your vehicle. If you have any questions regarding installation or the various components included with the Z1 Motorsports 370Z Fender Braces, consult with a Professional Mechanic, or contact Z1 Motorsports for more information.

## **PARTS INCLUDED:**

Item	Quantity	Description
1	1	Driver Side Fender Brace
2	1	Passenger Side Fender Brace
3	4	M8 RivNut
4	4	M8 Bolt

## **TOOLS REQUIRED:**

- Hydraulic Jack
- (2) 2-Ton (or greater) Jack Stands
- Ratchet
- Ratchet Extension(s)
- Assorted Metric Wrenches
- Assorted Metric Sockets
- Trim Removal Tool
- Pliers
- RivNut Installation Tool

## **SAFETY REQUIREMENTS:**

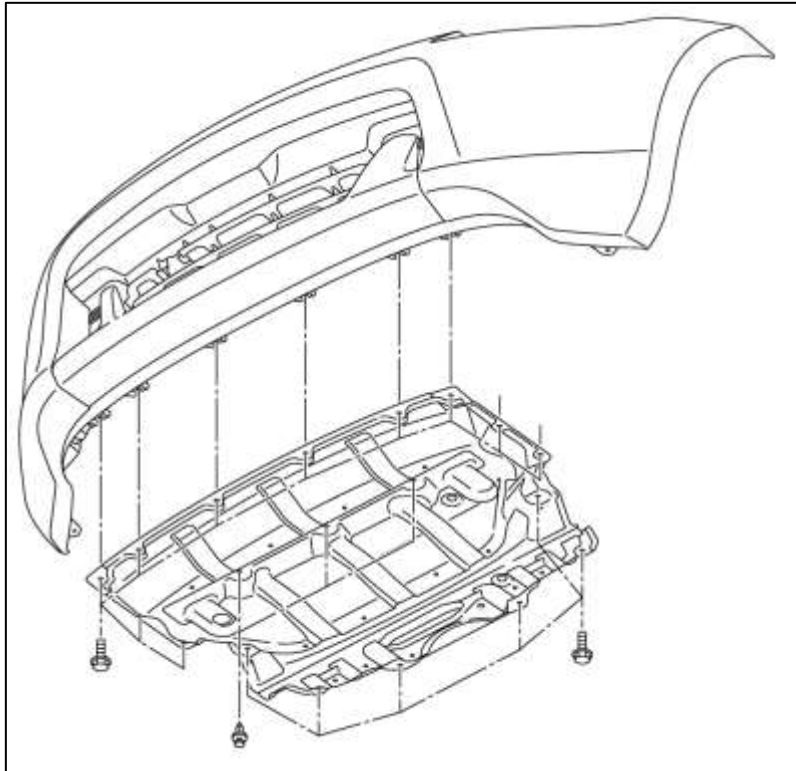
- Always wear safety glasses and any necessary protective garments. If using any fluids, chemicals, or solvents, a respirator is recommended.
- Always turn the ignition to the OFF position and disconnect the NEGATIVE battery terminal.
- Always use properly rated jack stands when working under your vehicle.
- Always keep limbs and parts away from moving drivetrain parts.
- Only operate drivetrain in safe space and well-ventilated areas.

## **BEFORE YOU BEGIN:**

Remove contents from the Z1 Motorsports 370Z Fender Brace and verify that ALL necessary hardware is present.

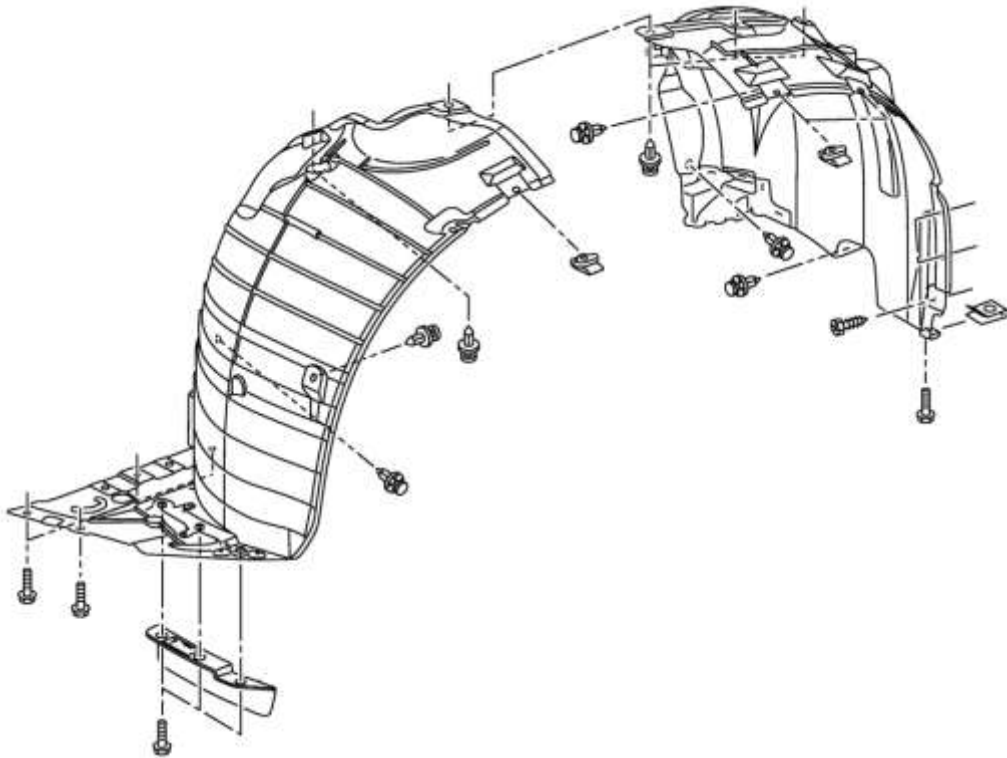
## **PROCEDURE:**

1. Place the transmission in Park position (or in Reverse gear if equipped with a manual transmission). Apply the parking brake.
2. Break loose the front Lug Nuts but do not remove them.
3. Locate the proper jacking points on the vehicle's chassis (refer to the Vehicle's Owner's Manual). Raise and support the vehicle using a jack and jack stands.
4. Remove the front wheels and lug nuts.
5. Open and support the hood of the vehicle.
6. Remove the Engine Undershroud. It will be secured with multiple bolts and plastic clips. *Figure 1.*



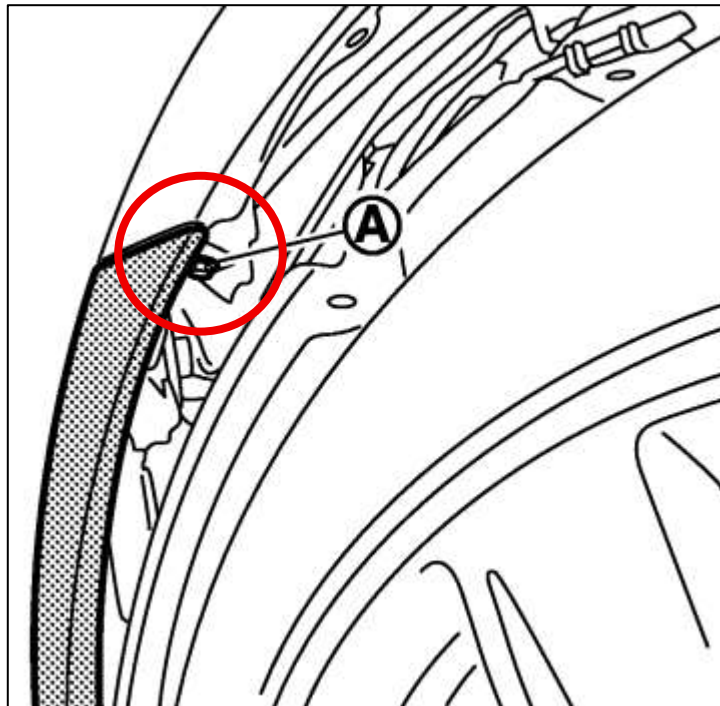
*Figure 1*

7. Remove the Front Fender Liners from the vehicle. They are held on by an assortment of bolts and plastic clips. *Figure 2.*



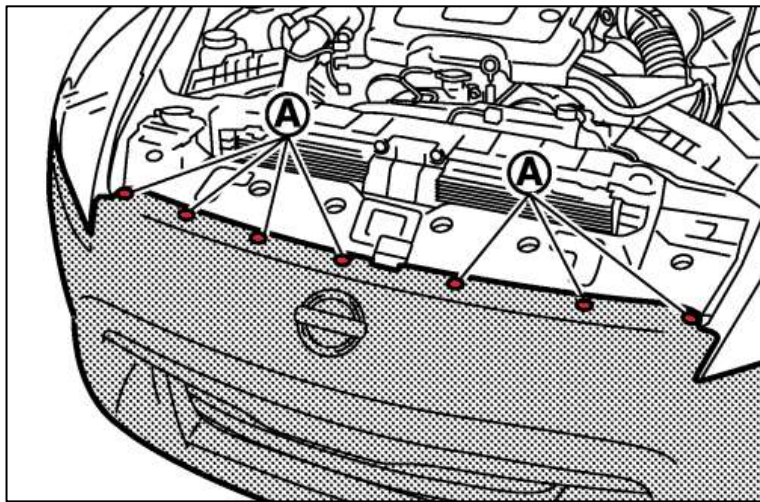
*Figure 2*

8. Remove the (1) one screw on each side of the top corner of the Front Bumper. *Figure 3.*



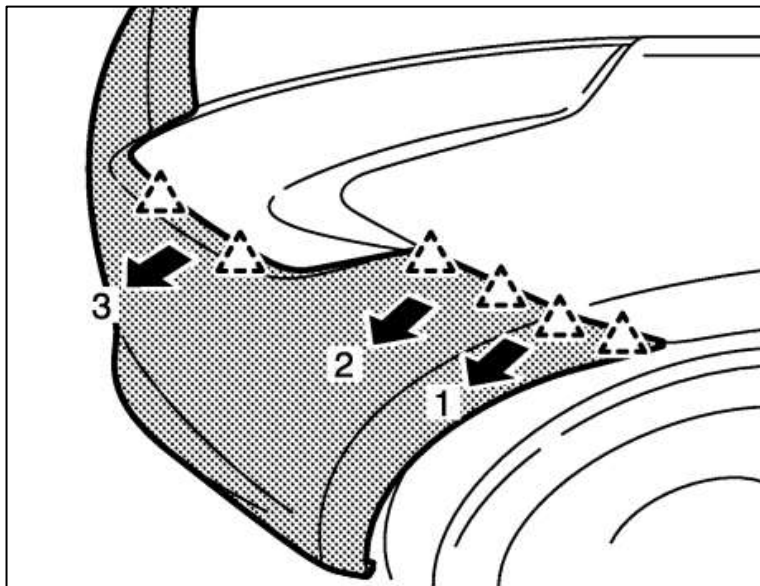
*Figure 3*

9. Remove the (7) seven plastic clips that secure the Upper Bumper to the Core Support. *Figure 4.*



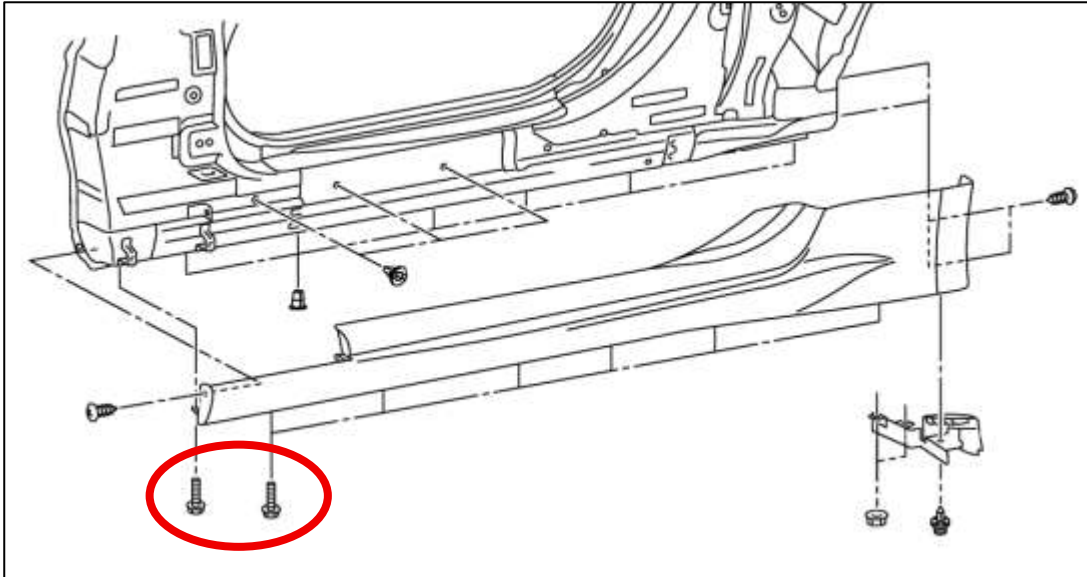
*Figure 4*

10. With a light pull motion, carefully disengage the Bumper Fascia from the clips just below each headlight. Remove the Bumper from the vehicle and set aside, some electrical connectors may need to be disconnected depending on any lights or accessories on the Bumper. *Figure 5.*



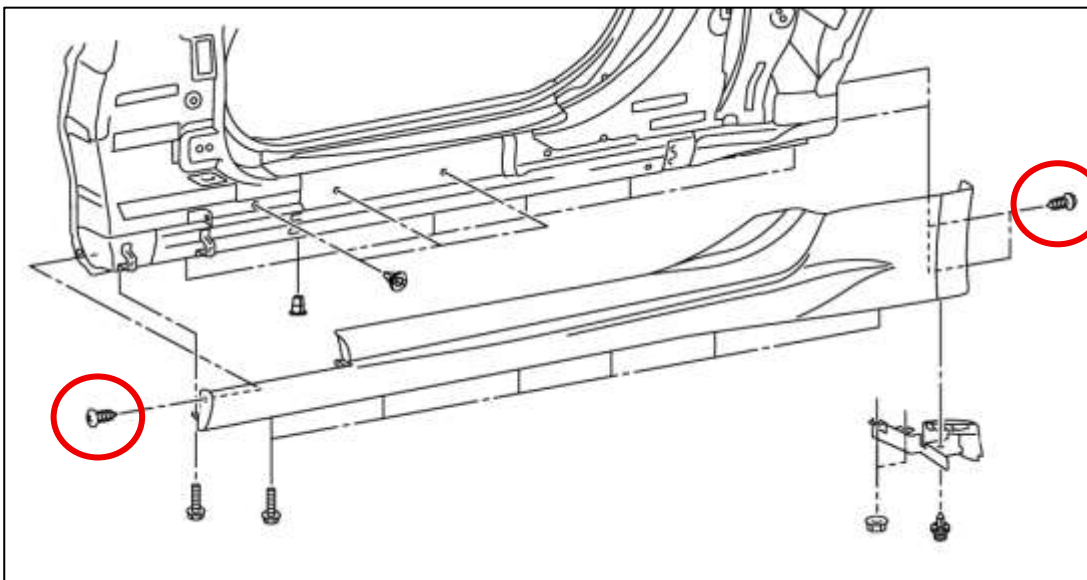
*Figure 5*

11. On the underside of the vehicle, remove the (7) seven bolts that secure the Side Skirt to the vehicle. *Figure 6.*



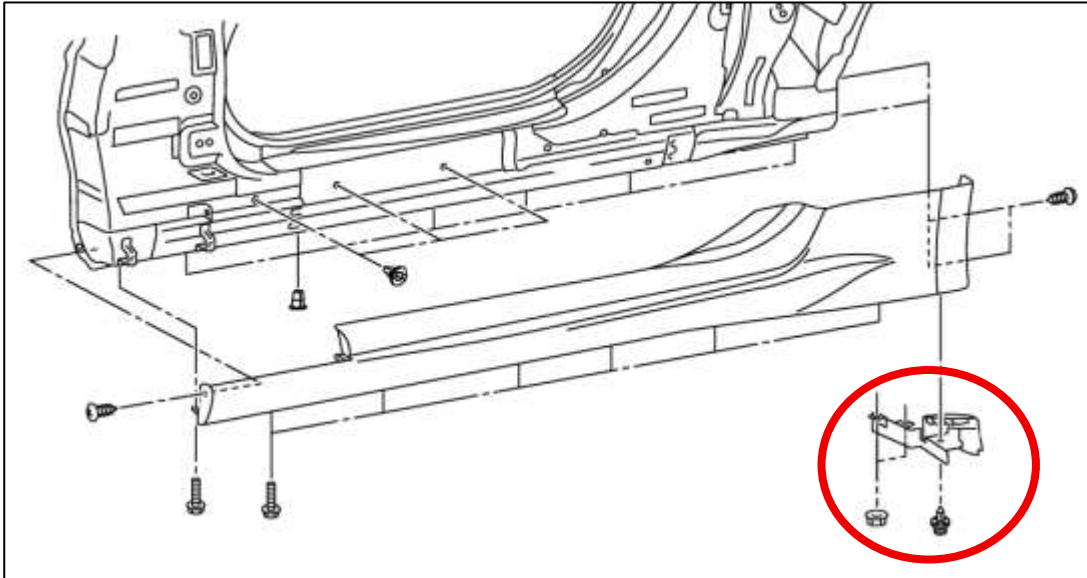
*Figure 6*

12. Remove the (3) three screws securing the front and rear of the Side Skirt to the Wheel Wells. Depending on the tools available to you, you may need to remove the rear wheels for access to these screws. *Figure 7.*



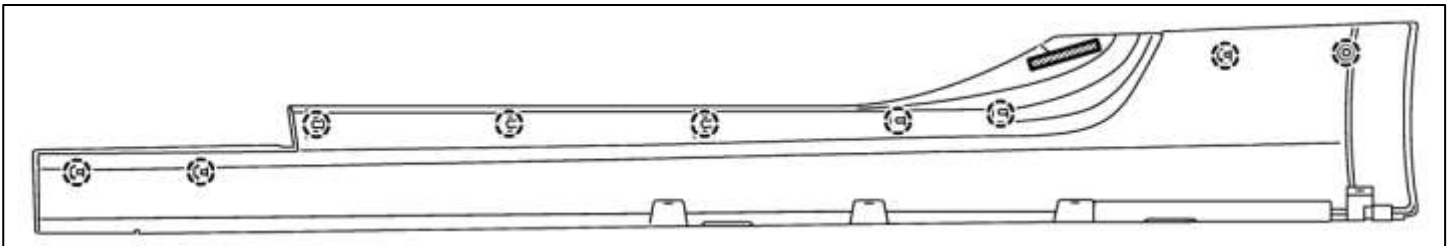
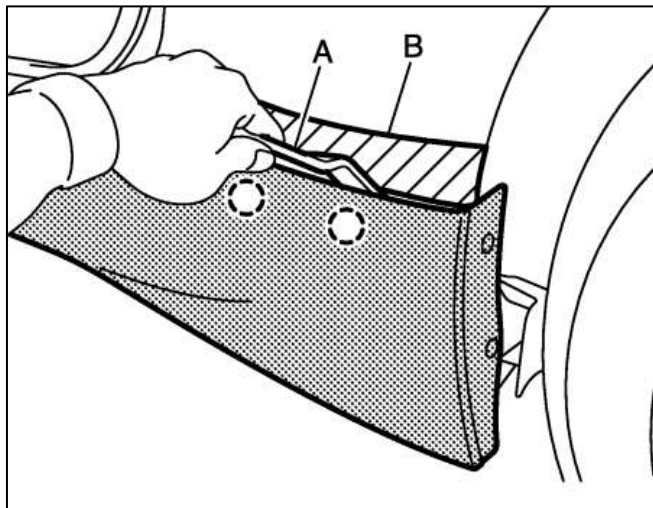
*Figure 7*

13. Remove the (2) two nuts and plastic clip securing the plastic trim piece on the rear on each side of the vehicle and remove the trim piece. *Figure 8.*



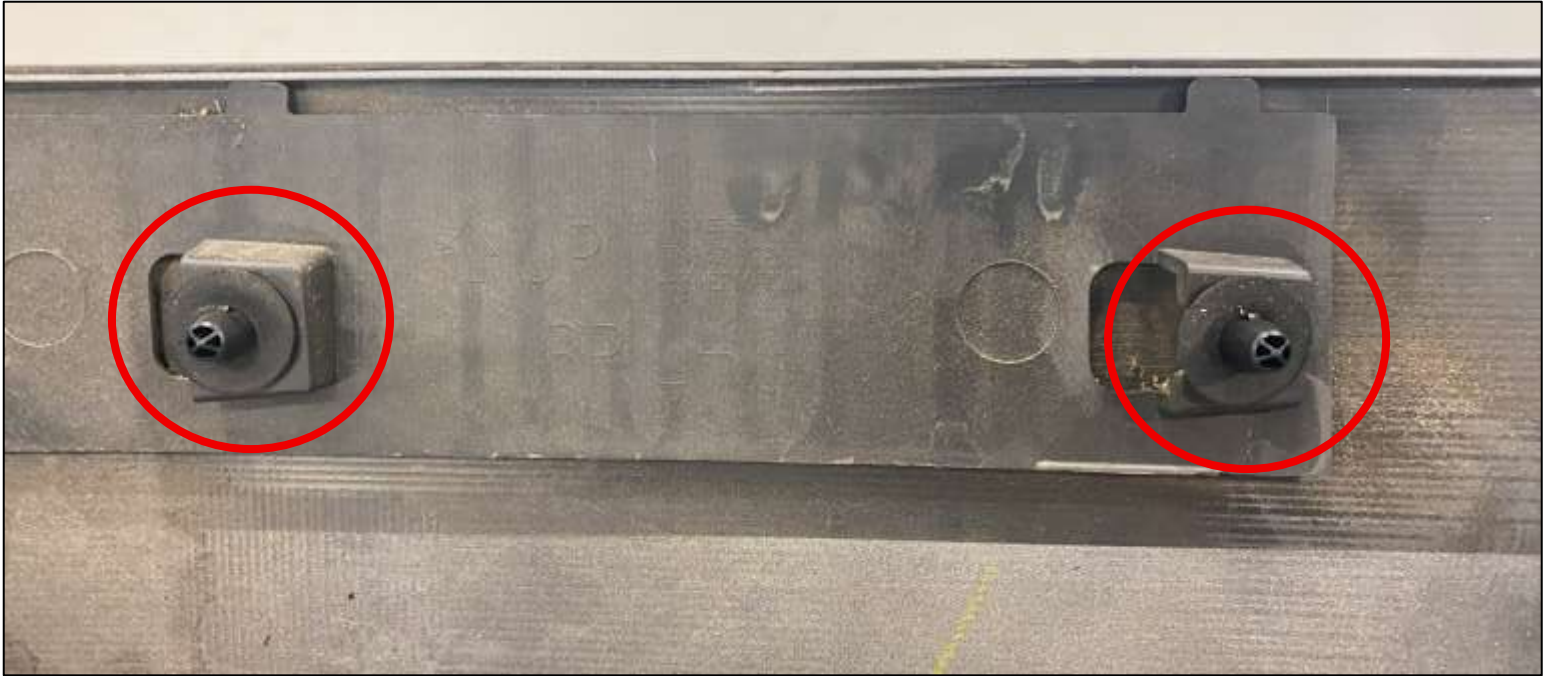
*Figure 8*

14. Pull each Side Skirt away from the vehicle. They are held on by (9) nine plastic clips that will need to be released. Once fully released, set the Side Skirts aside. *Figure 9.*



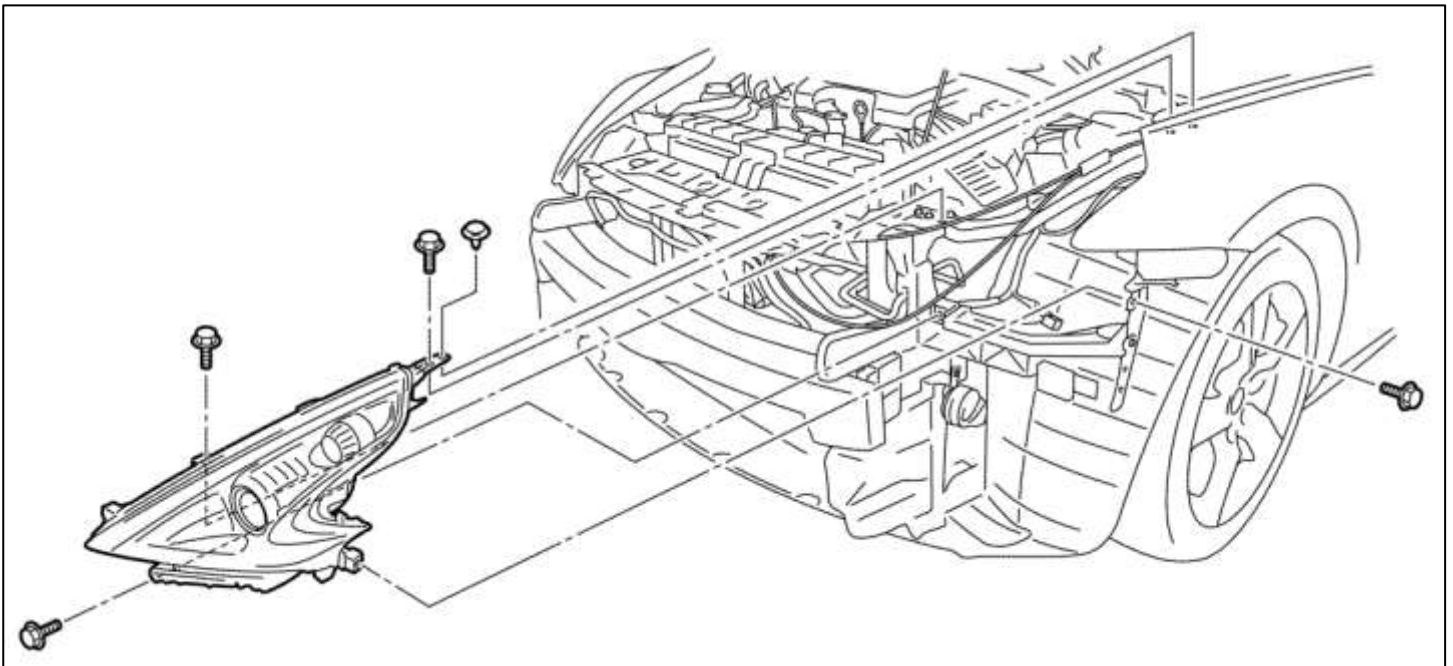
*Figure 9*

15. If any of the clips were left in the vehicle when removing the Side Skirt, remove them from the vehicle and reinstall them into the Side Skirts. *Figure 10.*



*Figure 10*

16. Remove the (4) four bolts and (1) one plastic clip securing each Headlight to the vehicle. *Figure 11.*



*Figure 11*

17. Pull the Headlight forward to remove it from the vehicle. Once released, disconnect the electrical connector securing it to the vehicle.
18. Disconnect the Logo Lights on the side of the Fender if applicable.
19. Open the door slightly and remove the (2) two bolts securing the Fender in the Door Jamb, (1) one is on the top, (1) one is on the bottom. *Figure 12.*



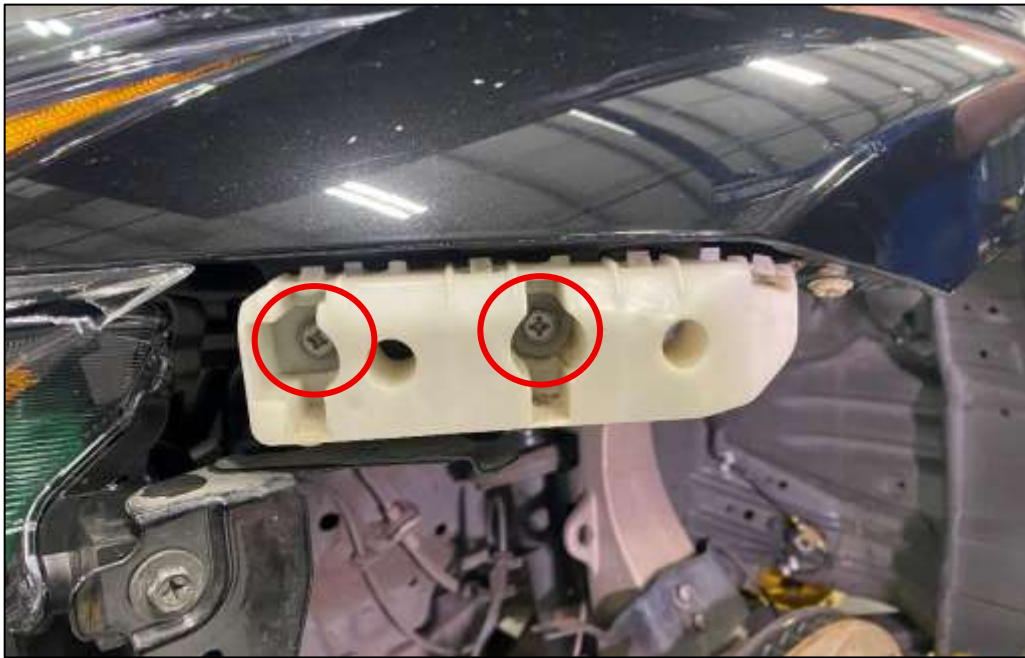
*Figure 12*

20. Remove the (2) two bolts on the bottom of each Fender. *Figure 13.*



*Figure 13*

21. Remove the (2) two Bolts towards the front of each Fender in the Bumper Clips. *Figure 14.*



*Figure 14*

22. Remove the (1) one Bolt on each side under the Headlight Mount. *Figure 15.*



*Figure 15*

23. Pull up the Trim on the side of the engine bay on covering the top of each Fender. *Figure 16.*



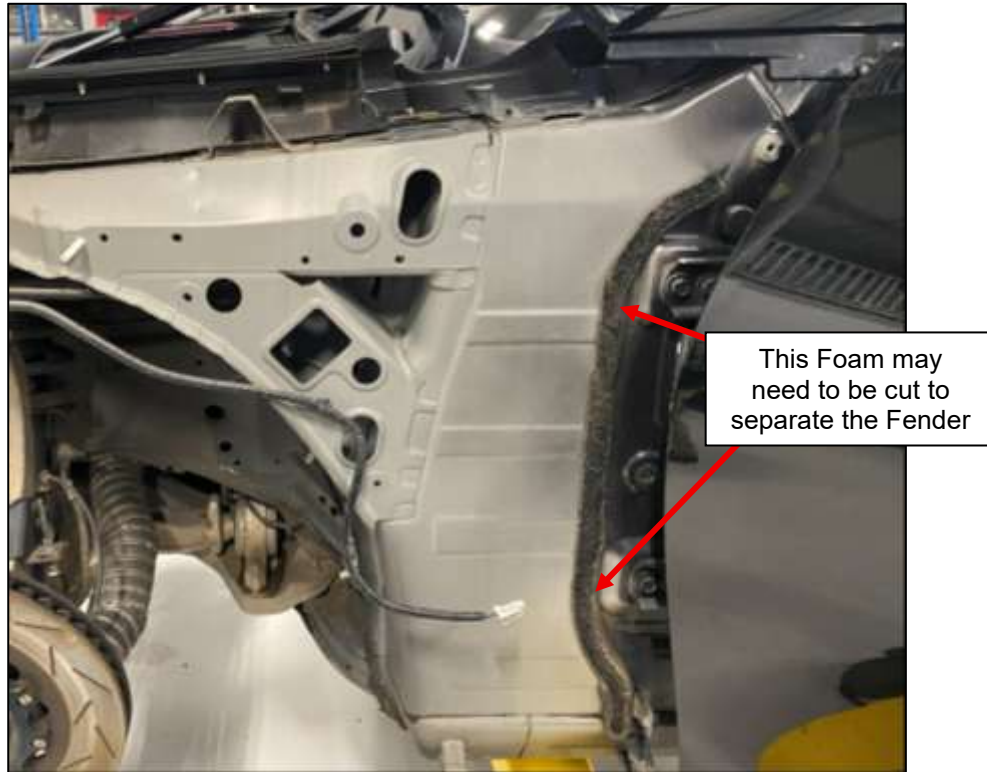
*Figure 16*

24. Remove the (3) three bolts on top of the Fender that secure it to the vehicle. *Figure 17.*



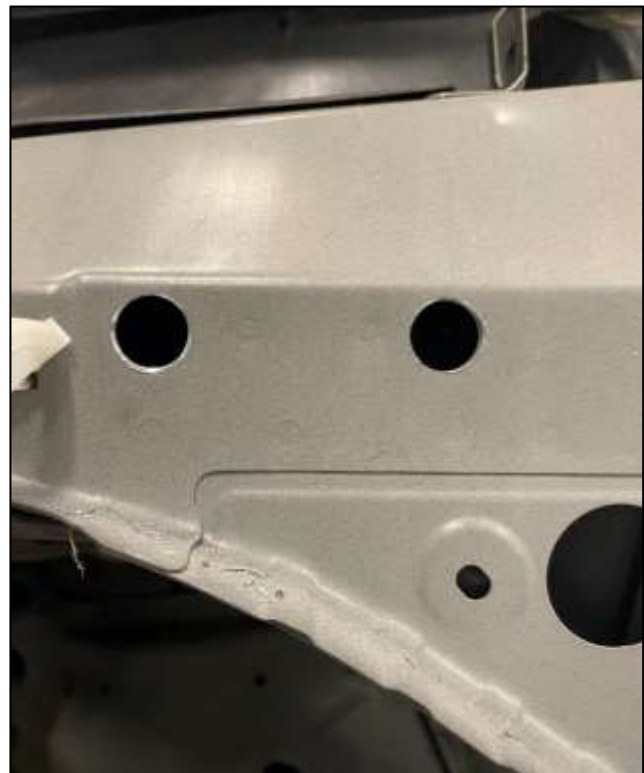
*Figure 17*

25. Slowly pull the Fender away from the vehicle. There is a layer of foam stuck to both the Fender and Frame that may need to be cut to separate the Fender. *Figure 18.*



*Figure 18*

26. Using a 9/16" Drill Bit, enlarge the (2) two factory holes towards the Front of the Frame. Be careful not to enlarge the holes too much, otherwise the RivNuts will not seat properly. *Figure 19.*



*Figure 19*

27. Install (1) one RivNut into each hole enlarged in Step 26. *Figure 20.*



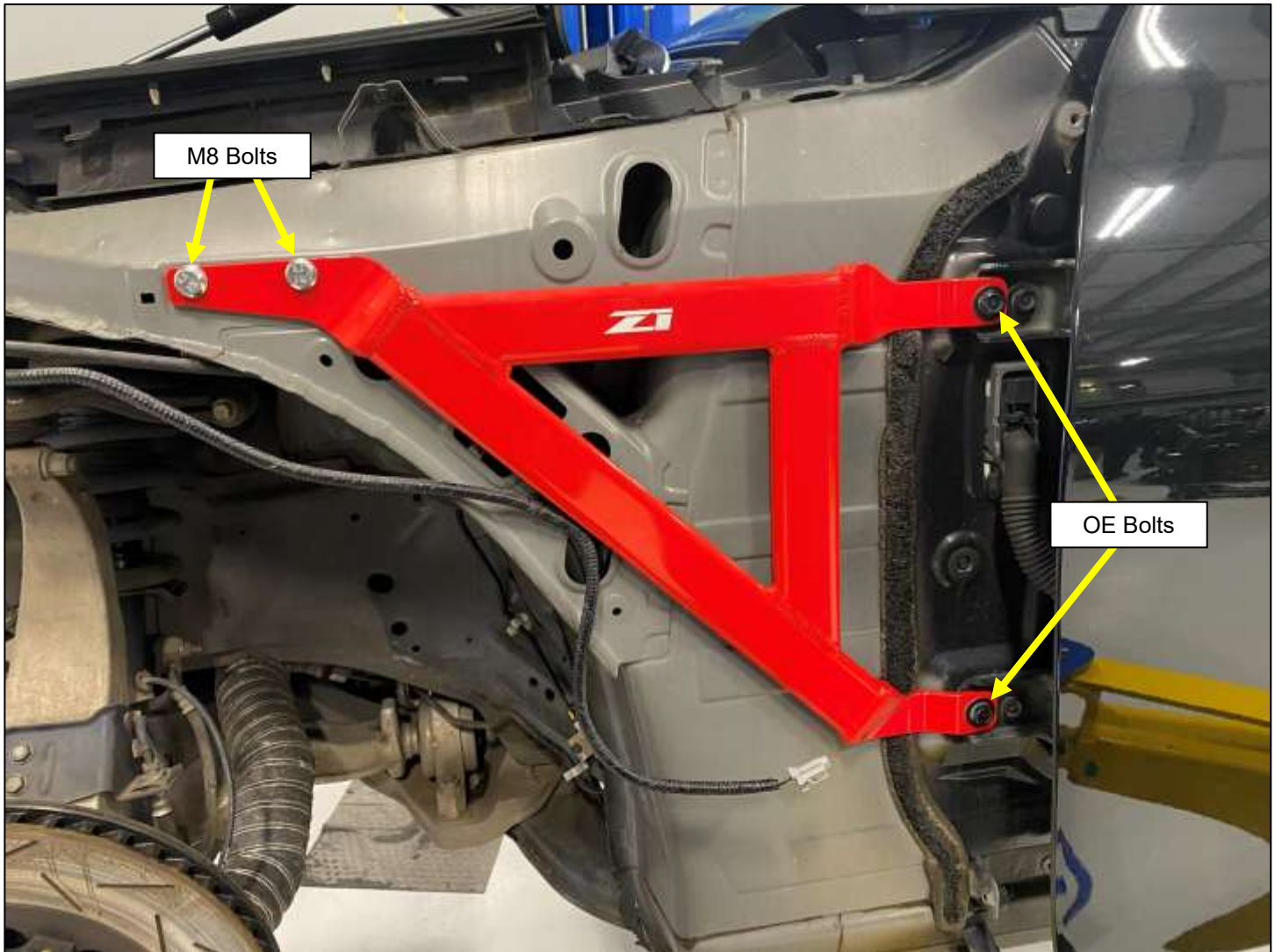
*Figure 20*

28. Remove the forward most bolt from each Door Hinge. Retain these bolts. *Figure 21.*



*Figure 21*

29. Locate the Fender Braces and M8 Hardware. Position the Fender Braces onto the vehicle as shown, and secure with the M8 Bolts at the front into the RivNuts. Reinstall the Door Hinge Bolts to secure the rear of the Fender Braces. *Figure 22.*



*Figure 22*

30. Follow Steps 2-24 in reverse order to reinstall all body and trim components.

**END**

**Additional Technical Support:**  
Contact Z1 Motorsports at [info@z1motorsports.com](mailto:info@z1motorsports.com)  
Or call 770-838-7777 between 9am and 6pm ET